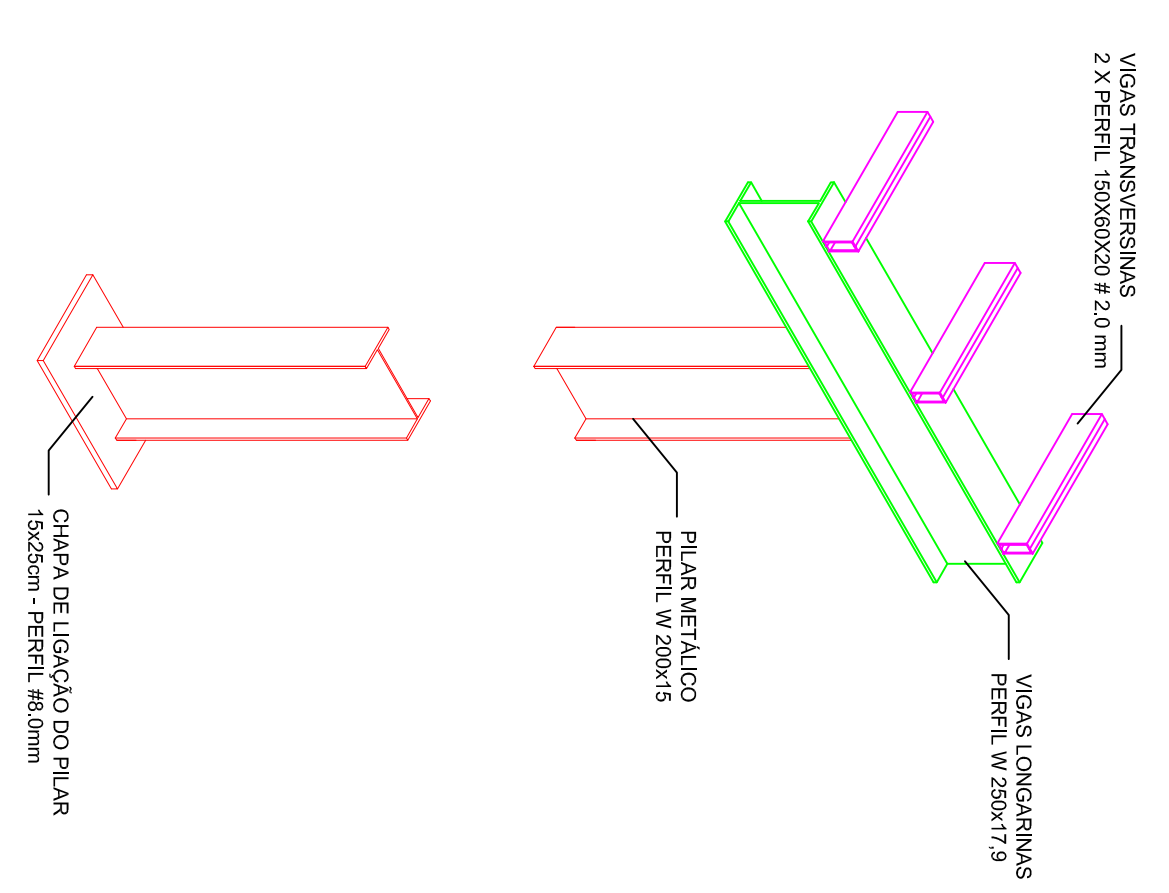
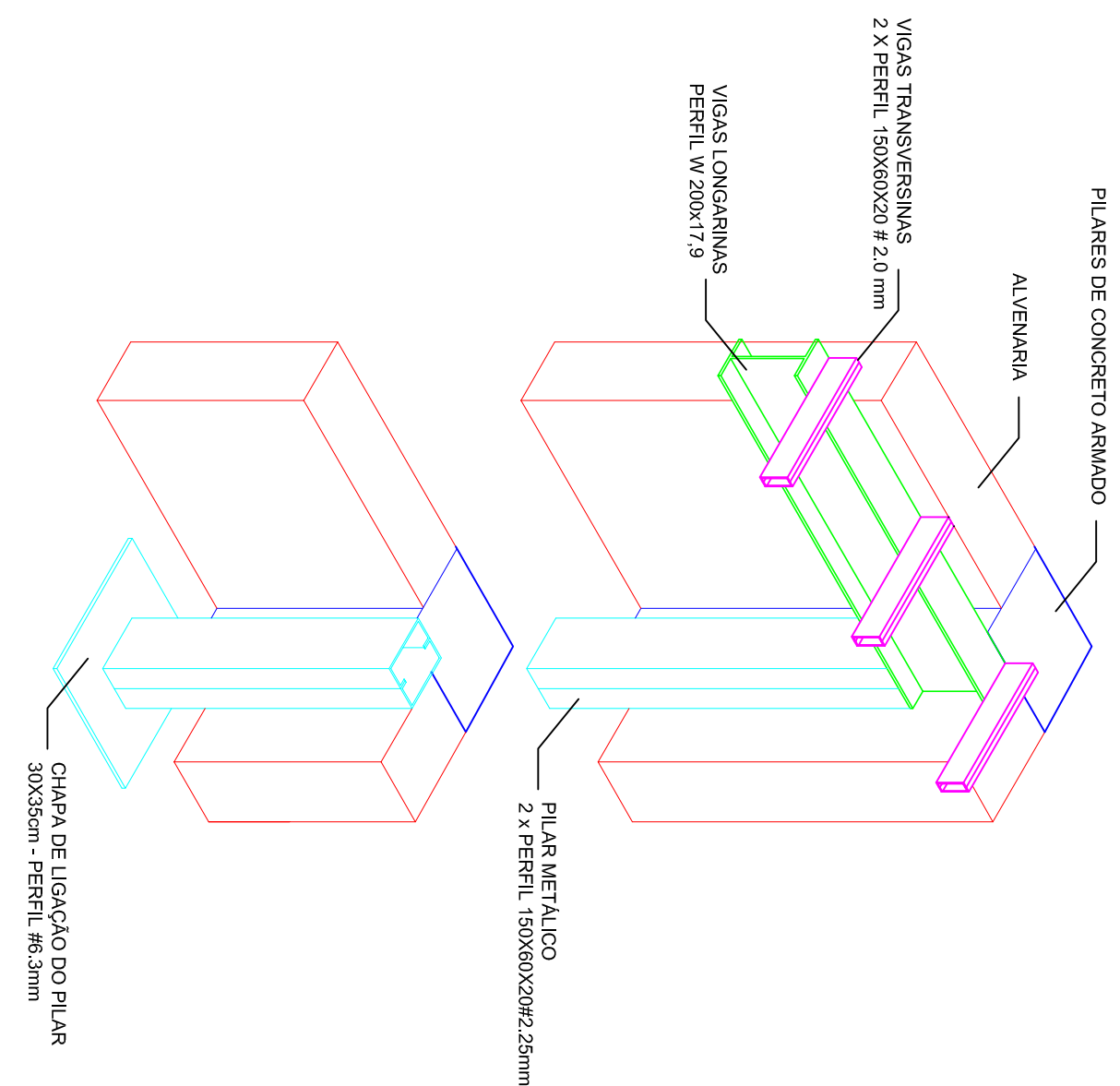


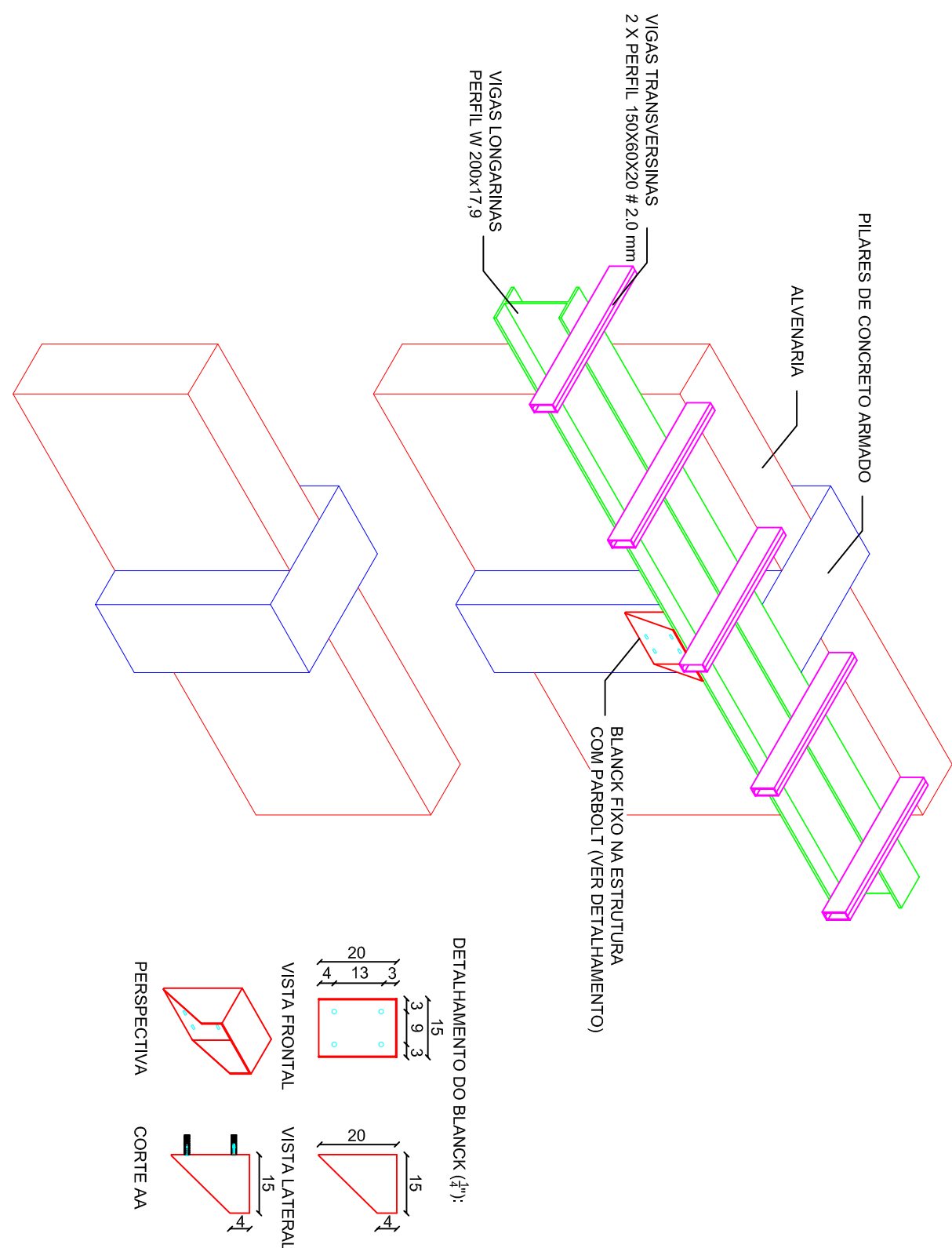
DETALHAMENTO 01:



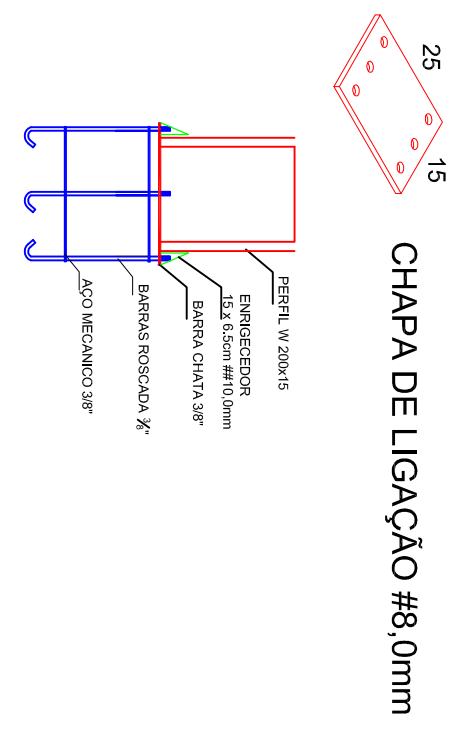
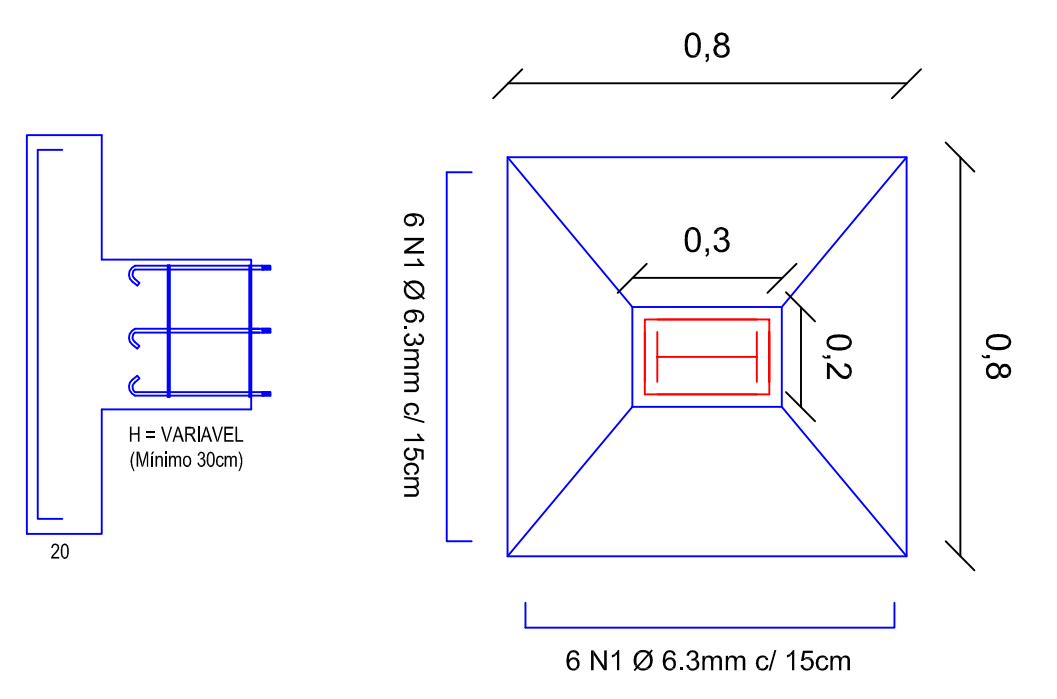
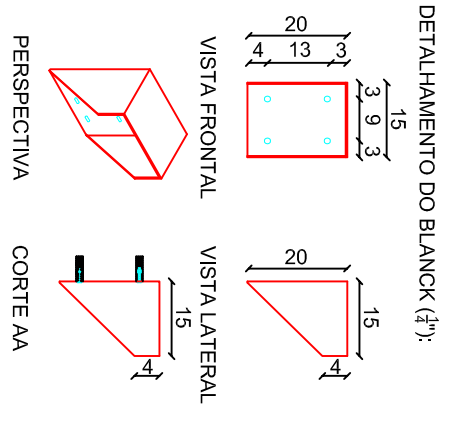
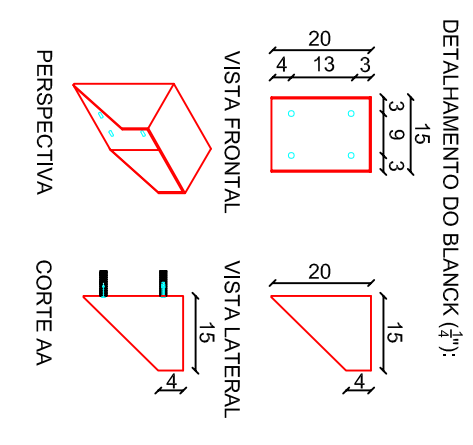
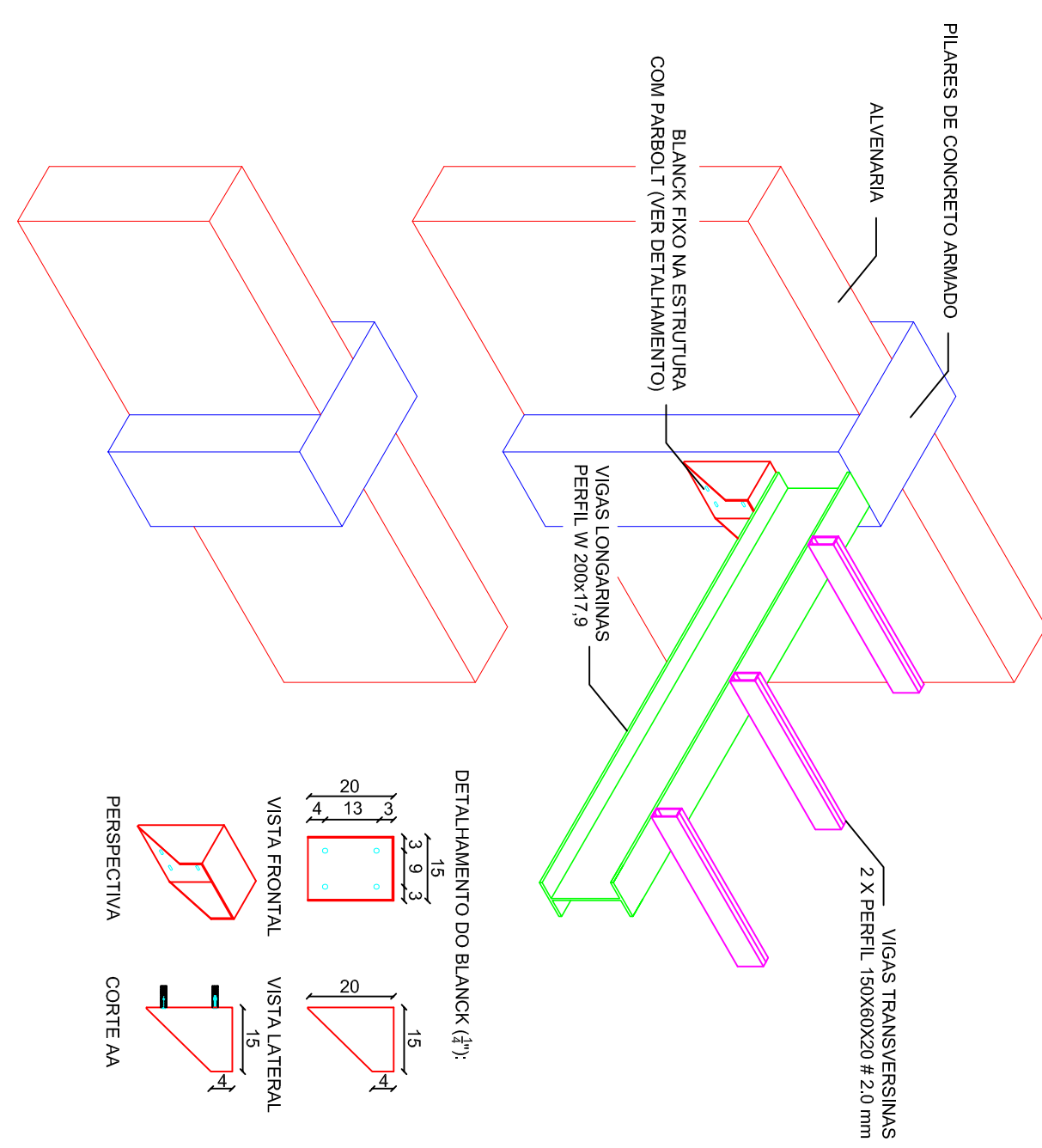
DETALHAMENTO 02:



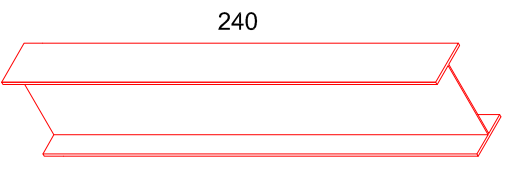
DETALHAMENTO 03:



DETALHAMENTO 04:

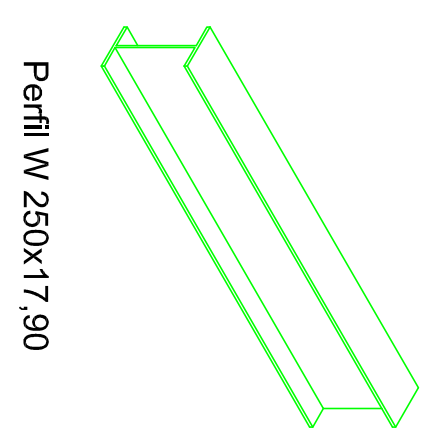


PILARES:



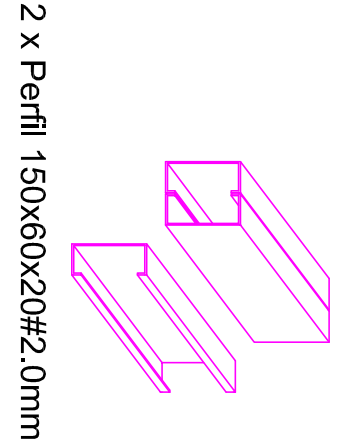
PERFIL W 200X15

LONGARINAS:



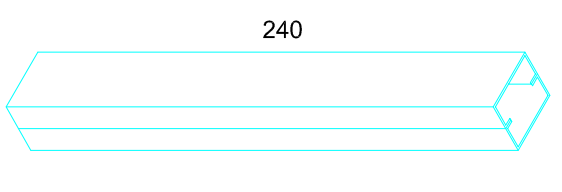
Perfil W 250X17,90

TRANSVERSINAS:



2 x Perfil 150x60x20#2,0mm

PILARES DE CANTO:



2 x Perfil 150x60x20#2,25mm



CHAPA DE LIGAÇÃO #1"

MUNICÍPIO DE MODELO - SC

REFERENCIAL: SITUACÃO ATUAL
SITUACÃO PROPOSTA
DETALHES GERAIS

OBRA: BARRAÇÃO INDUSTRIAL

PROPRIETÁRIO: Município de Modelo - SC
CNPJ: 03.021.632/0001-11

RESP. TEC.:
Márcio José Sarin
CREA/SC 140377-5

ESCALA: INDICADA

DATA: 28/08/2017

FRANQUIA:

E 02/03

Município de Modelo - SC - Bairro Industrial